

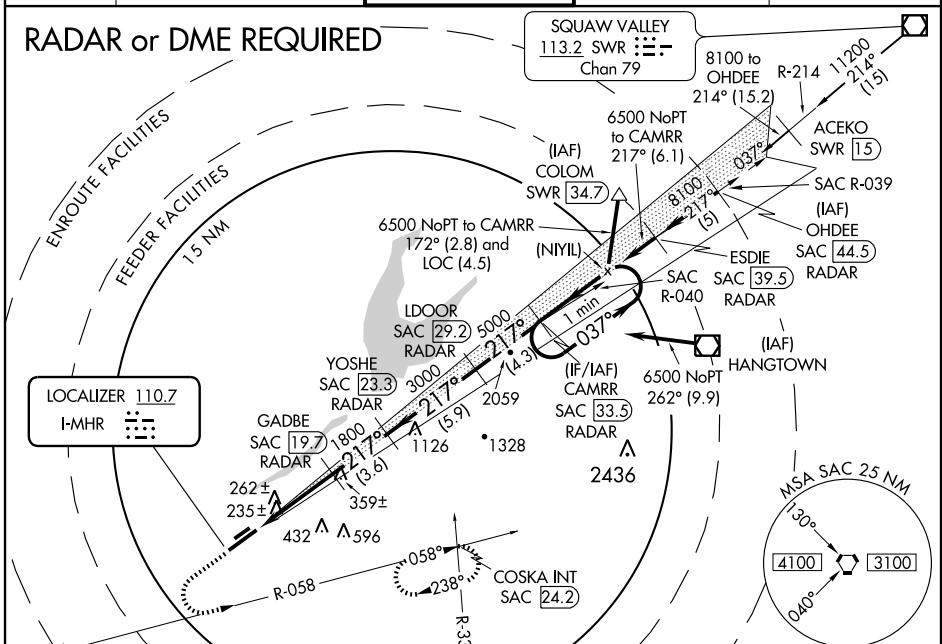
ILS or LOC RWY 22L

SACRAMENTO MATHER (MHR)

LOC I-MHR 110.7	APP CRS 217°	Rwy Idg 11301
		TDZE 96
		Apt Elev 96

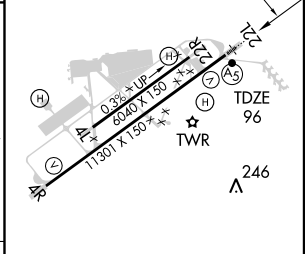
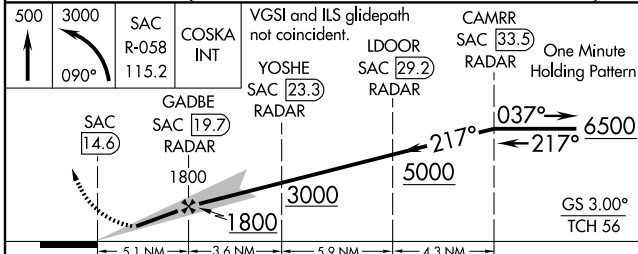
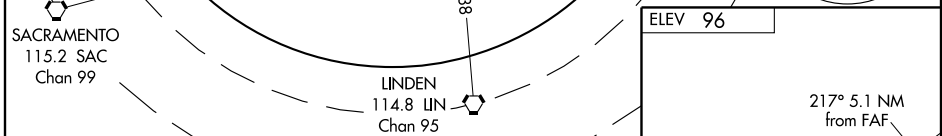
<p>▽ Circling NA north of Rwy 4L-22R. ▲ When ALS inoperative, increase Cat. E ILS 1/4 mile, LOC 1/2 mile.</p>	<p>MALSR</p>	<p>MISSED APPROACH: Climb to 500, then climbing left turn to 3000 via heading 090° and SAC R-058 to COSKA INT/ SAC 24.2 DME and hold, continue climb-in-hold to 3000.</p>
---	--------------	---

ATIS 118.325	NORCAL APP CON 127.4 317.5	MATHER TOWER 120.65 282.25	GND CON 121.85 307.9	CLNC DEL 121.85 307.9
------------------------	--------------------------------------	--------------------------------------	--------------------------------	---------------------------------



SW-2, 14 FEB 2008 to 13 MAR 2008

SW-2, 14 FEB 2008 to 13 MAR 2008



CATEGORY	A	B	C	D	E
S-ILS 22L	296/24 200 (200-½)				
S-LOC 22L	500/24 404 (500-½)	500/40 404 (500-¾)	500/50 404 (500-1)		
CIRCLING	560-1 464 (500-1)	560-1½ 464 (500-1½)	660-2 564 (600-2)	800-2½ 704 (800-2½)	

MIRL Rwy 4L-22R	FAF to MAP 5.1 NM				
HIRL Rwy 4R-22L					
Knots	60	90	120	150	180
Min:Sec	5:06	3:24	2:33	2:02	1:42